

Application area

- Pre-cleaning and cleaning of wheat, rye and oats
- The upper layers of husk are cleaned and partially removed from the surface of the grain by intensive scouring

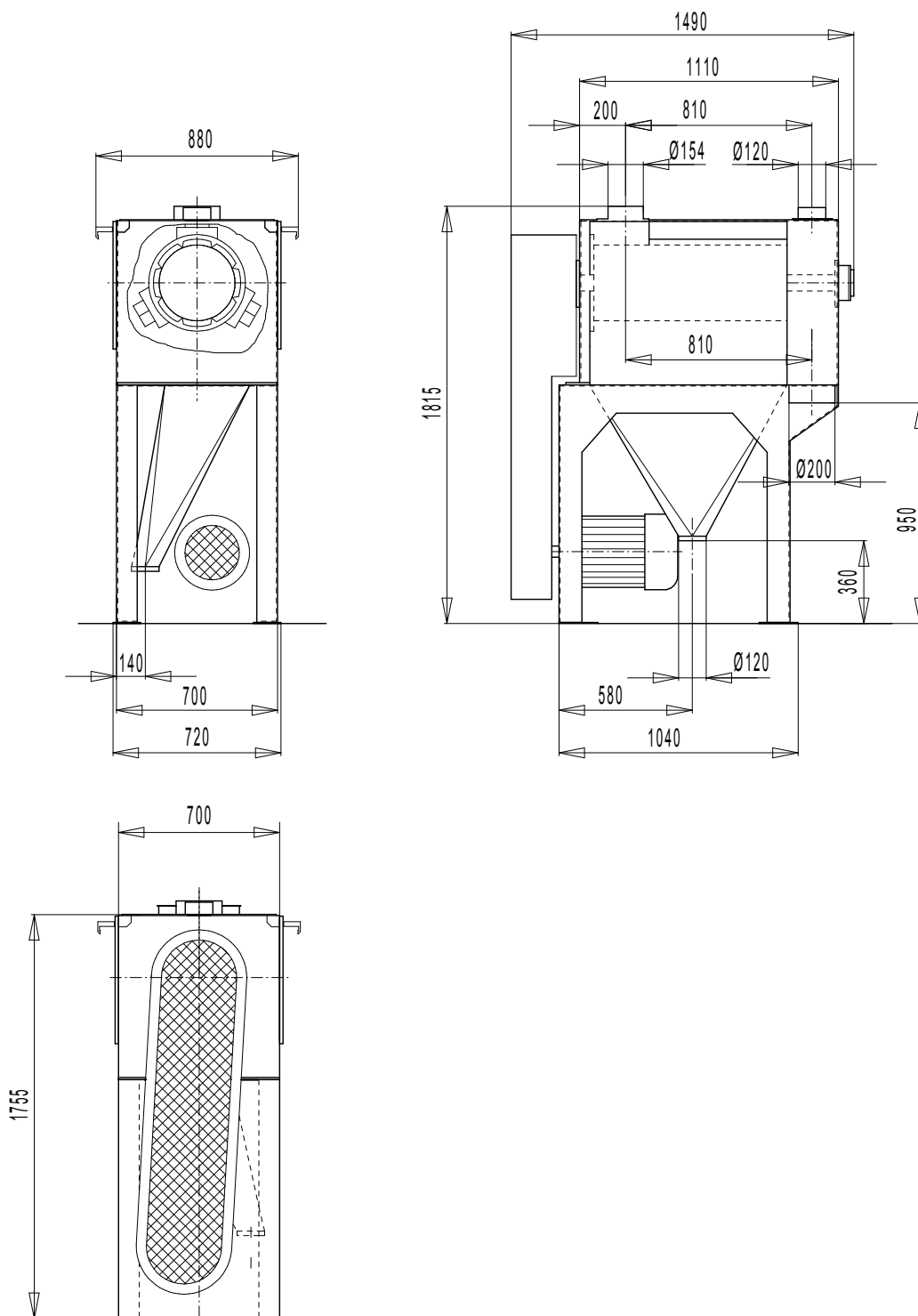
Principle of operation

- The working principle is based on intensive scouring, generated by a rotor furnished with different working segments
- Incoming product is gripped by the rotor segments and transferred to the working space between rotor segments and jacket segment, where a grain to grain friction happens
- The scoured and lighter particles will be sucked off by a connected aspiration system

Main features

- Compact construction and low space requirement
- Simple installation
- Minimum breakage
- Wear parts easily replaceable
- ATEX conformity available on request

Scouring machine SMH 20



Type	Through put (t/h)	Dimensions			Air require- ment (m ³ /min)	Driving power (kW)	Weight (kg)
		Length (mm)	Width (mm)	Height (mm)			
SMH 20	15 - 20	1490	880	1815	12	18,5	945

We reserve the right to make technical modifications.
MMW 2011/07