



Application area

- The Bran duster is intended for grinding of wheat and rye down to the last grain to increase the flour yield.
- The flour particles adhering to the husks are detached and sent along with the rest of the flour.

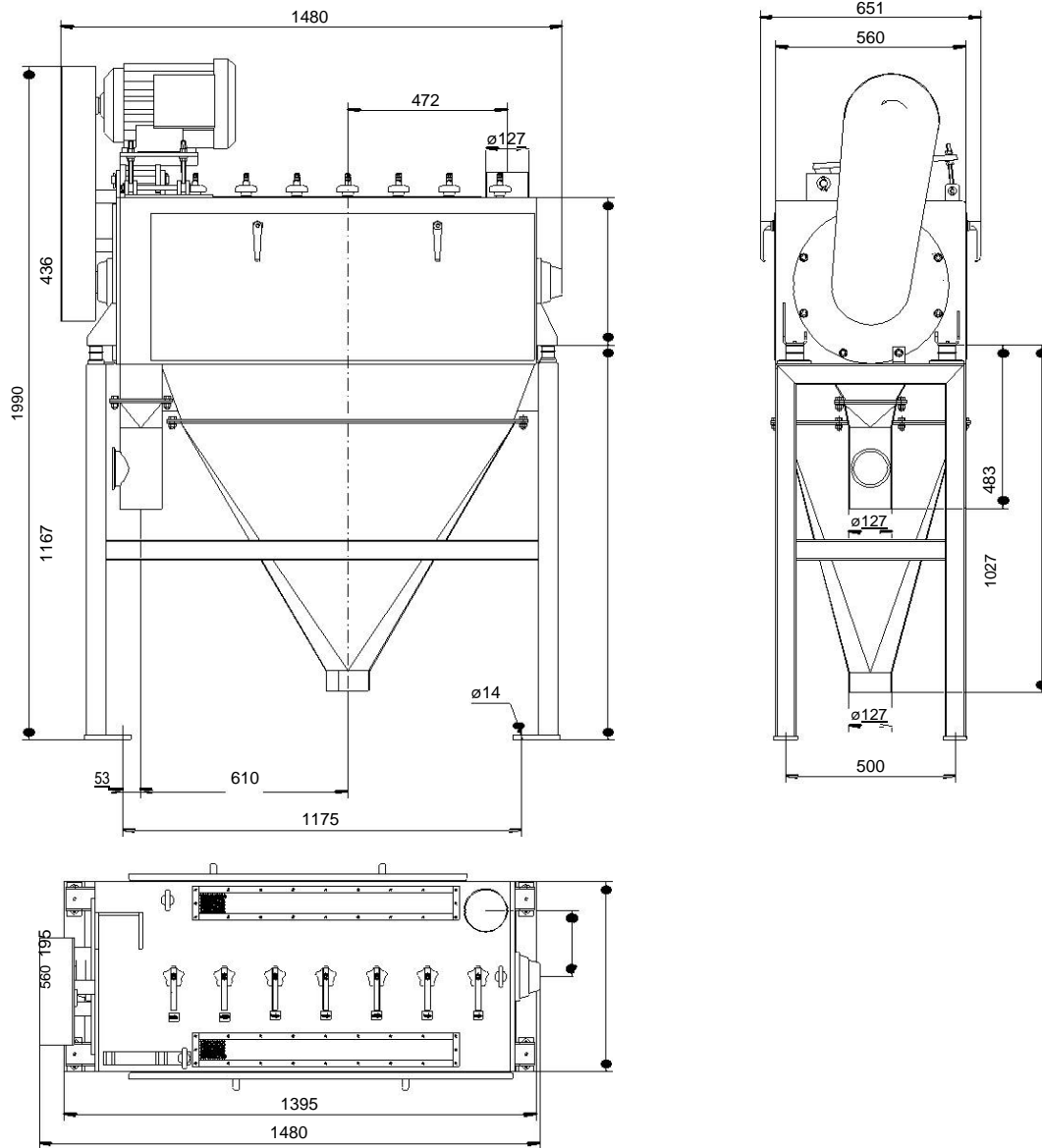
Principle of operation

- The product processed in the Bran duster is grain husk with adhering flour residues. It is charged to the working room and captured by four beater stripes and hurled against the sieve mantle.
- The sieve mantle, executed as a polygon, alternately accelerates and slows the husk particles. Intensive processing ensures that remaining flour particles are removed from the husk.

Main features

- Rotor shaft with beater stars and beater stripes
- Adjustable spacing between beater stripes and sieve mantle.
- The sieve mantle consists of two halves which are clamped by fast-action-snap clamps and can be easily replaced.
- Adjustable breaking elements allow the control of the dwell of the product inside the working room to influence the operating effect.
- Drive motor with pivoting motor base
- Housing with machine door for maintenance and process monitoring
- ATEX- conformity available on request

Bran duster KL 400 x 1000



Type	Throughput		Sieve dimensions		Driving power (kW)	Weight (kg)
	Bran, fine (kg/h)	Bran, coarse (kg/h)	Diameter (mm)	Lenght (mm)		
	KL 400 x 1000	900 - 1700	700 - 1000	400		

We reserve the right to make technical modifications.
MMW 2012/05