

In a milling plant one of the most important machines is the roller mill which is used mostly for grinding wheat and other grain into flour and bran. Grinding is performed by horizontal rollers, which are available with two different diameters of 250 mm or 300 mm and with two different finishing, the smooth ones and the striped ones. The two sides of the roller mill can be adjusted independently and allow separate grinding of different fractions. The mill has a cast iron frame, while the outer casing can be finished in food grade paint coating or realized in stainless steel.



### GENERAL CHARACTERISTICS

- Modern design.
- Low construction height.
- Simply handling and maintenance.
- Automatic monitoring and regulation of product stream.
- Changing rollers as packet or each single roller separately.
- Improved sanitation.
- Product discharging either pneumatically or by gravity.
- Product contact parts made of stainless steel.
- ATEX conformity available on request.

### Application area

Milling of wheat, rye, triticale, spelt and other types of grain.

Processing of additional products for the food industry (spices, tea and so on).

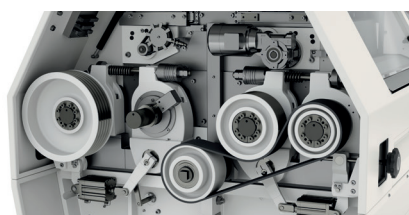
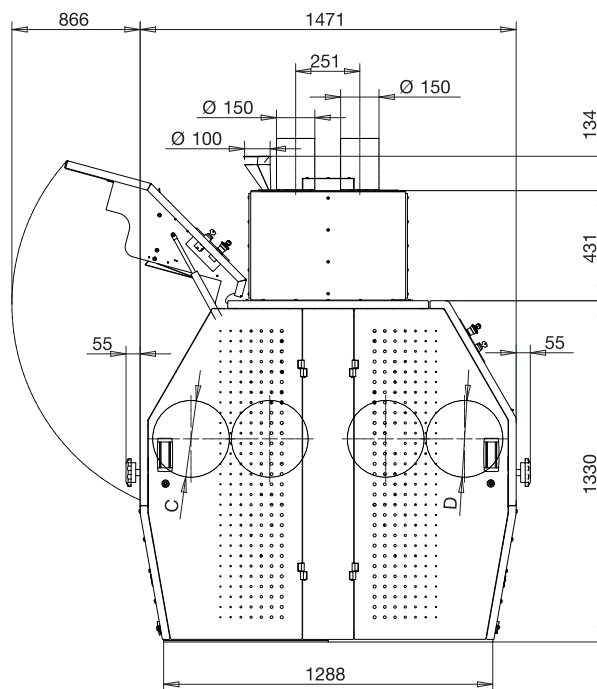
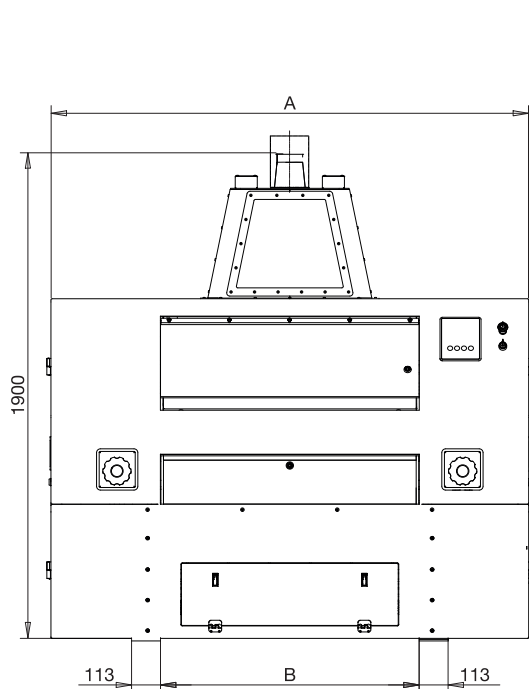
Gentle milling in stages for the chemical industry and other sectors of the processing industry.

### Principle of operation

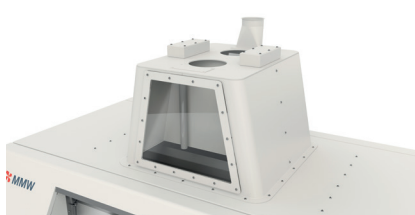
The product stream enters the feed shaft through the intake and is fed into the milling gap through the feed rollers and the feed guide device.

Depending on the field of application of the mill, the product in the milling gap between the two milling rollers is grinded, shredded, or crushed by shearing and/or compression.

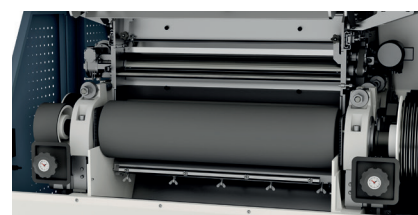
The capacity and milling effect are essentially determined by the length and diameter of the milling rollers, their surface characteristics, their peripheral speed as well as the size of the milling gap.



The roller provides high adjustment accuracy and grinding stability. Thanks to the ribbed belts, the roller mills are silent and guarantee trouble-free operation.



The plexiglass window allows you to monitor the product processing. Due to its design, the product doesn't get stuck. The sensors in the inlet measure the level of the product at several points.



Grinding rolls are made from centrifugal cast-iron with hardened surface. They are mounted on self-aligning roller bearings on double row.

Type	Roller Length	Dimensions				Weight Kg
	mm	A / mm	B / mm	C / Ø mm	D / Ø mm	
RM-0600-250	600	1700	610	250	250	3150
RM-0600-300	600	1700	610	300	300	3850
RM-0800-250	800	1500	810	250	250	3450
RM-0800-300	800	1500	810	300	300	4150
RM-1000-250	1000	1900	1010	250	250	3750
RM-1000-300	1000	1900	1010	300	300	4450
RM-1250-250	1250	2150	1260	250	250	4100
RM-1250-300	1250	2150	1260	300	300	4800

Upon request, the roller mills can be supplied with pairs of rollers of different diameters on the two sides.

The data reported in this table are informative.